

On solid ground

The Hydraulic Compactors are designed for effectively compacting soil in trenching, ground levelling, embankment construction, driving in and pulling out posts, sheet piling and other formworks.

Optional 360° endless hydraulic rotation allows optimal positioning and precise handling (HC 350 – 1050).

The integrated flow and pressure control valve prevents overloading.

Optional backfill blades for clearing and moving soil.

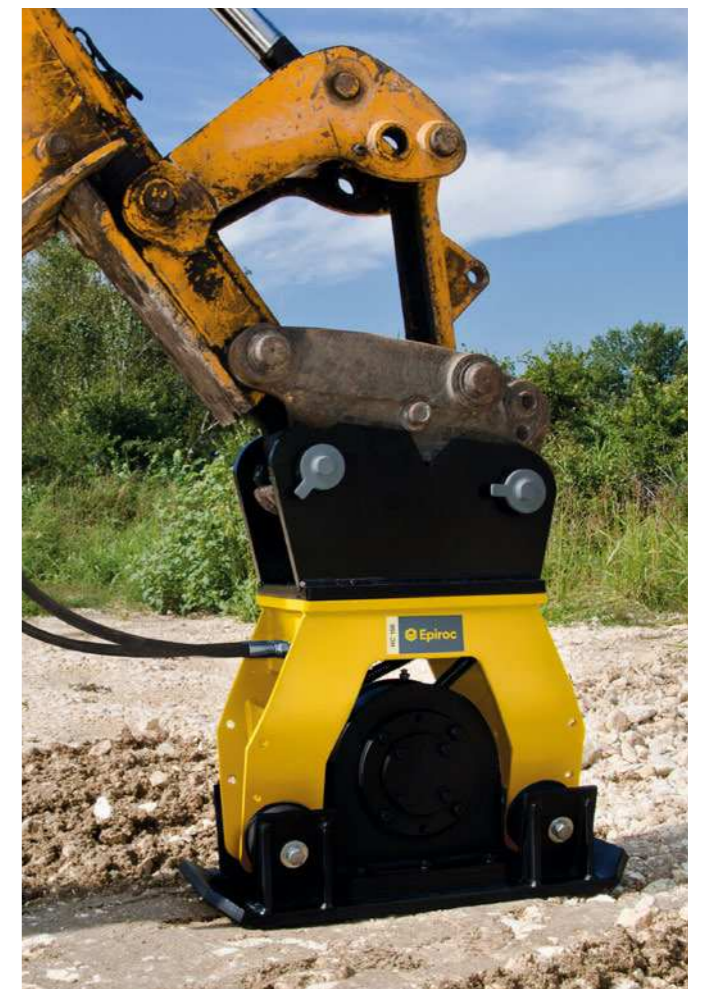
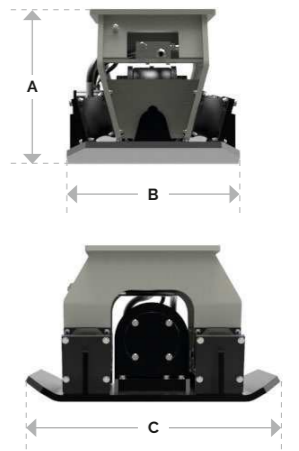
To improve force distribution and thus lessen the strain, the outward shock mounts are tilted 15°.

No need for manual greasing thanks to the permanent oil splash lubrication.



HC range		HC 150 ³⁾	HC 350 ³⁾	HC 450 ³⁾	HC 850 ³⁾	HC 1050 ³⁾
Static version						
Carrier weight class ¹⁾	t	1 – 3	3 – 8	4 – 9	9 – 20	20 – 40
Service weight ²⁾	kg	160	320	430	880	1.130
Product weight	kg	140	286	400	828	1.044
A	mm	486	623	622	764	786
B	mm	295	475	610	710	864
C	mm	721	846	929	1.272	1.364
Rotating version						
Carrier weight class ¹⁾	t	-	4 – 8	5 – 9	9 – 20	20 – 40
Service weight ²⁾	kg	-	440	550	1.055	1.400
Product weight	kg	-	408	522	1.003	1.304
A	mm	-	913	912	1.054	1.088
B	mm	-	475	610	710	864
C	mm	-	846	929	1.272	1.364
Static and rotating version						
Frequency	Hz	35	35	37	37	37
Force	kN	13.7	22.6	35.3	71.6	103
Compaction coverage	m ²	0.17	0.31	0.40	0.68	0.90
Oil flow rate	l/min	30	57	76	114	151
Max. operating pressure	bar	150	150	150	150	150
Oil flow rate (rotation)	l/min	-	25	25	25	25
Max. operating pressure (rotation)	bar	-	320	320	320	320

¹⁾Weights apply to standard carriers only. Any variances must be agreed with Epiroc and/or the carrier manufacturer prior to attachment.
²⁾Attachment with average-sized adapter plate.
³⁾Drainage line required



Our low-noise Hydraulic Compactors work quickly, are simple to operate and make positioning easy.