



Kubota



# KX015-4

## 1-1.5 TONNE MINI EXCAVATOR

Powerful and versatile

Machine Weight (cabin/canopy) 1470/1420 kg

Engine output 13.3PS/9.8kW

# KX015-4 | EXCAVATOR SPECIFICATIONS

|                                |                               |                            | *With rubber shoe type                |
|--------------------------------|-------------------------------|----------------------------|---------------------------------------|
| Model                          |                               | KX015-4                    |                                       |
| Machine weight                 | Cabin / Canopy                | kg                         | 1470 / 1420                           |
| Operating weight               | Cabin / Canopy                | kg                         | 1545 / 1495                           |
| Bucket capacity, std. SAE/CECE |                               | m <sup>3</sup>             | 0.035                                 |
| Bucket width                   | With side teeth               | mm                         | 422                                   |
|                                | Without side teeth            | mm                         | 402                                   |
| Engine                         | Model                         |                            | D782-BH                               |
|                                | Type                          |                            | Water-cooled, diesel engine<br>E-TVCS |
|                                | Output ISO9249                | PS/rpm                     | 13.3 / 2300                           |
|                                |                               | kW/rpm                     | 9.8 / 2300                            |
|                                | Number of cylinders           |                            | 3                                     |
|                                | Bore x Stroke                 |                            | mm 67 x 73.6                          |
| Displacement                   |                               | cc 778                     |                                       |
| Overall length                 |                               | mm                         | 3710                                  |
| Overall height                 | Cabin                         | mm                         | 2350                                  |
|                                | Canopy                        | mm                         | 2330                                  |
| Swivelling speed               |                               | rpm                        | 9.1                                   |
| Rubber shoe width              |                               | mm                         | 230                                   |
| Tumbler distance               |                               | mm                         | 1090                                  |
| Dozer size (width x height)    |                               | mm                         | 990 x 230                             |
| Hydraulic pumps                | P1, P2                        |                            | Variable displacement pump            |
|                                | Flow rate                     | ℓ/min                      | 16.6                                  |
|                                | Hydraulic pressure            | MPa (kgf/cm <sup>2</sup> ) | 20.6 (210)                            |
|                                | P3                            |                            | Gear Type                             |
|                                | Flow rate                     | ℓ/min                      | 10.4                                  |
| Max. digging force             | Hydraulic pressure            | MPa (kgf/cm <sup>2</sup> ) | 20.1 (205)                            |
|                                | Arm                           | kN (kgf)                   | 7.3 (740)                             |
| Max. digging force             | Bucket                        | kN (kgf)                   | 12.7 (1300)                           |
|                                | Boom swing angle (left/right) | deg                        | 75 / 60                               |
| Auxiliary circuit              | Flow rate                     | ℓ/min                      | 27                                    |
|                                | Hydraulic pressure            | MPa (kgf/cm <sup>2</sup> ) | 20.6 (210)                            |
| Hydraulic reservoir            |                               | ℓ                          | 28                                    |
| Fuel tank capacity             |                               | ℓ                          | 21                                    |
| Max. travelling speed          | Low                           | km/h                       | 2.1                                   |
|                                | High                          | km/h                       | -                                     |
| Ground contact pressure        | Cabin                         | kPa (kgf/cm <sup>2</sup> ) | 25.5 (0.26)                           |
|                                | Canopy                        | kPa (kgf/cm <sup>2</sup> ) | 24.5 (0.25)                           |
| Ground clearance               |                               | mm                         | 160                                   |

\*Machine weight: with 35kg standard bucket and fully served  
 \*Operating weight: with 75kg operator, 35kg standard bucket and fully served

## LIFTING CAPACITY

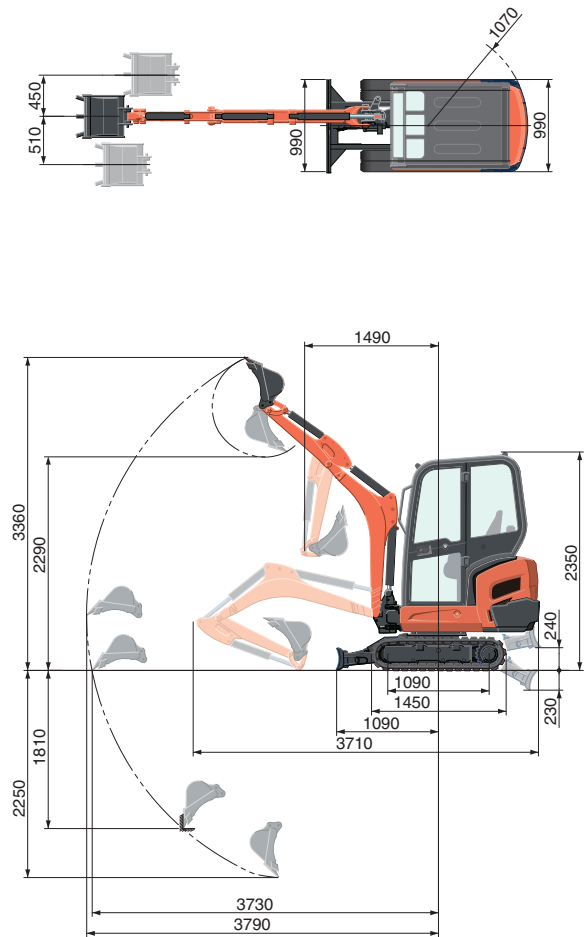
Cabin, Rubber version

| Lift Point Height | Lifting point radius (2m) |            |            | Lifting point radius (max.) |            |            | kN (ton) |
|-------------------|---------------------------|------------|------------|-----------------------------|------------|------------|----------|
|                   | Over-front                |            | Over-side  | Over-front                  |            | Over-side  |          |
|                   | Blade Down                | Blade UP   |            | Blade Down                  | Blade UP   |            |          |
| 1.5m              | 3.0 (0.30)                | 3.4 (0.35) | 2.5 (0.26) | -                           | -          | -          |          |
| 1.0m              | 4.5 (0.46)                | 3.5 (0.36) | 2.3 (0.24) | -                           | -          | -          |          |
| 0.5m              | 5.4 (0.55)                | 3.3 (0.34) | 2.1 (0.22) | 2.6 (0.27)                  | 1.6 (0.17) | 1.1 (0.11) |          |
| 0m                | 5.3 (0.54)                | 3.2 (0.32) | 2.0 (0.21) | -                           | -          | -          |          |

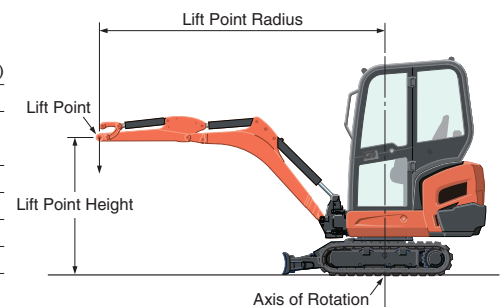
\*The lifting capacities are based on ISO 10567 and do not exceed 75% of the static tilt load of the machine or 87% of the hydraulic lifting capacities of the machine.

\*\*The excavator bucket, hook, sling and other lifting accessories are not included on this table.

## WORKING RANGE

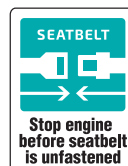


950 mm arm  
Unit: mm



\* Working ranges are with Kubota standard bucket, without quick coupler.  
 \* Specifications are subject to change without notice for purpose of improvement.

**Kubota (U.K.) Limited**  
 Dormer Road, Thame, Oxfordshire OX9 3UN  
 Telephone: 01844 268140  
 Fax: 01844 216685  
[www.kubota.co.uk](http://www.kubota.co.uk)



**For Earth, For Life**